

德利板 *Toppal*[®]

CRYSTAL
ACRYLIC
彩 晶 板

2022
DECORATING
MATERIALS



Acrylic is highly reflective and has a glass-like look while being lighter and more flexible. Acrylic sheet is able to be postformed under certain heat and pressure, to produce round edge profile for cabinet doors. Being smooth and glossy, acrylic is easy enough to clean and hardly leave stains on it, our crystal acrylic has a wide range of designer-pick colours and wood grains, makes it another perfect interior materials for households or offices.

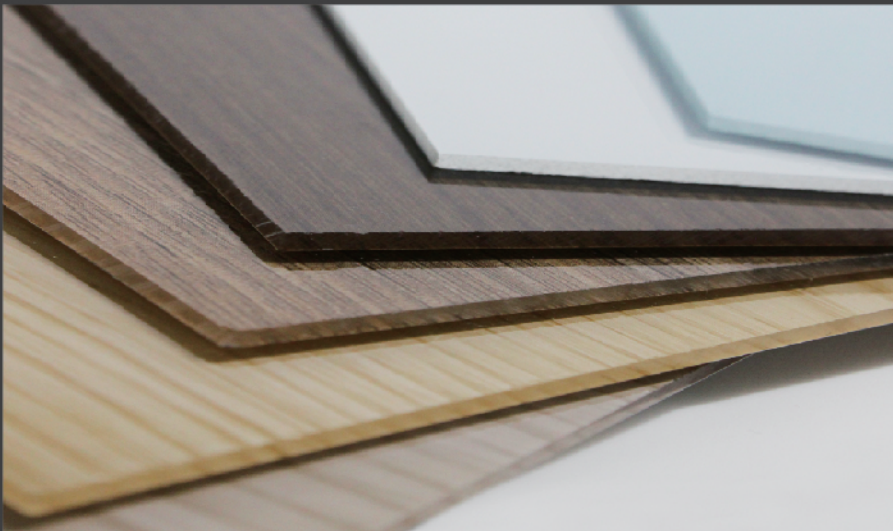
彩晶板由高抗刮亞克力板加工而成，特別為室內裝飾打造，具有非常接近玻璃的反光度，而亞克力材料本身比玻璃更輕也更安全。我們的彩晶板還可加工成彎角櫃門，可配搭原色亞克力封邊條，邊位圓滑打磨，增加室內的安全性及美觀度，彈性也比玻璃更高。彩晶板的表面高光平滑，能像鏡子一樣反射倒影物，以高質量的建材豐富室內設計的層次感。備有最新款的純色系列及木紋款式，適合用於家居或辦公室等項目。

* Clean with acrylic cleansers or water on a soft damp cloth. Do not use chemicals to clean crystal acrylic such as glass cleaners, abrasive or caustic cleaners.

* Best to apply with solvent-based glues. Do not apply all-purpose adhesive glues on crystal acrylic.

* 清潔時請以亞克力專用清潔劑或以清水噴灑在微濕布上抹淨。切勿以其他帶化學物質的清潔用品如玻璃或強力清潔劑。

* 黏貼時請以無酸性的溶劑如PVA白膠，切勿使用萬能膠或帶酸性的膠水以刮花或溶蝕顏色。





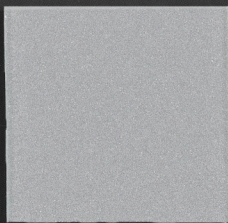
CY116



CY104



CY152



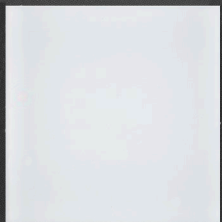
CY111



CY151



CY150



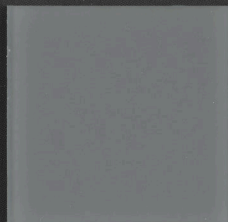
CY107



CY134



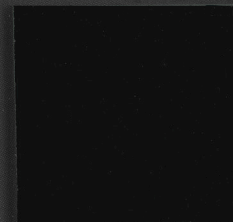
CY144



CY145



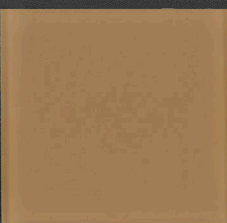
CY136



CY131



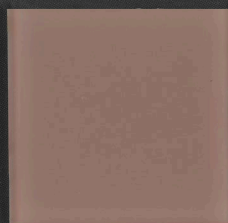
CY143



CY139



CY146



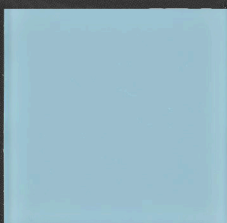
CY147



CY135



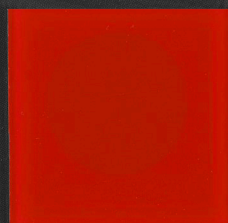
CY148



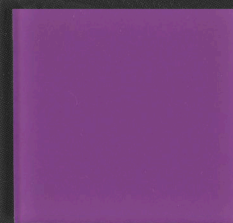
CY149



CY138



CY132



CY137



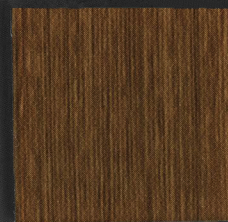
CY223



CY224



CY225



CY226



www.toppal.com

